



**Acoustically optimized mass loaded vinyl for sound blocking,  
designed for soundproofing, very strong and flexible, easy to install**

# **INSTALLATION Manual**

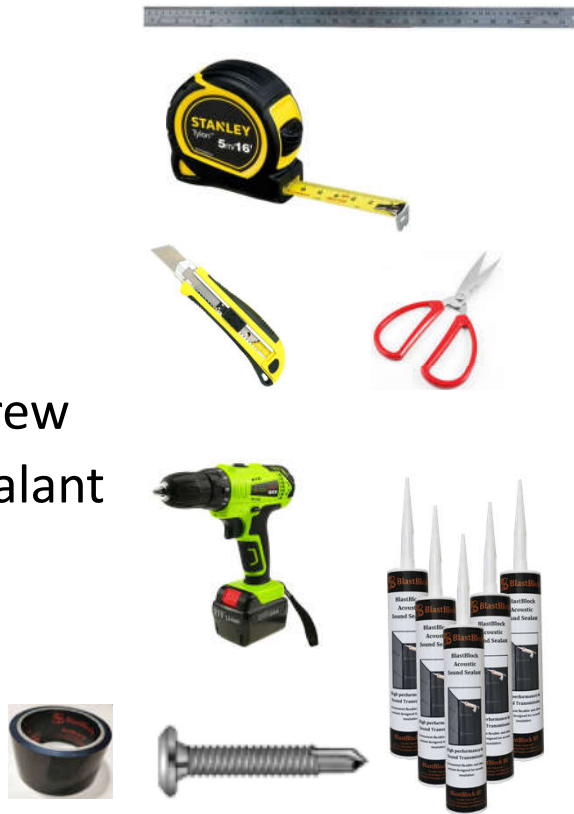


**BlastBlock BV**

Van der Takstraat 8  
3071 LL Rotterdam, The Netherlands  
+31 10 310 4928 Email: [info@blast-block.com](mailto:info@blast-block.com)

# Required Material:

- Tape Measure
- Utility Knife
- Screw Driver
- 3/4" Wafer Head Screw
- Acoustical Sound Sealant
- BlastTape

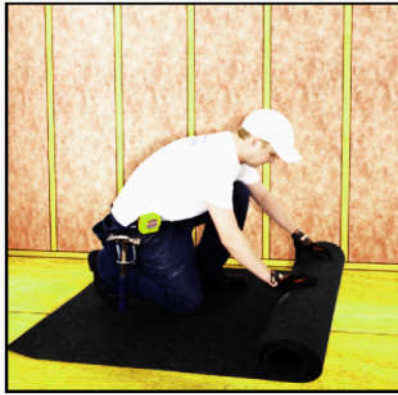


# Optional Material:

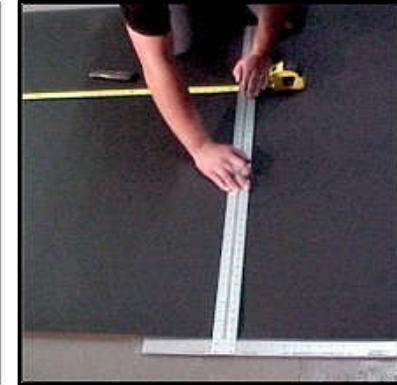
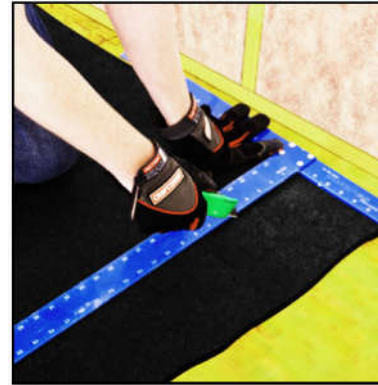
- Acoustical Sealant Pad



# Measuring and Cutting



Place the roll of BlastBlock on the floor, then cut to length



Use the square when cutting BlastBlock to length for installation runs

**BlastBlock BV**

Van der Takstraat 8  
3071 LL Rotterdam, The Netherlands  
+31 10 310 4928 Email: [info@blast-block.com](mailto:info@blast-block.com)

# Wall Installation

Installing BlastBlock on steel studs is the same process as installation on wood studs, with a few variations. You must of course use self-tapping sheet metal screws, with tin caps, fender washers, or similar to prevent the BlastBlock material from tearing loose under its own weight. Metal caps and self tapping wafer head screws are available from BlastBlock BV.



**BlastBlock BV**

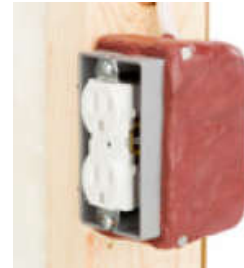
Van der Takstraat 8  
3071 LL Rotterdam, The Netherlands  
+31 10 310 4928 Email: [info@blast-block.com](mailto:info@blast-block.com)

# Acoustical Sealant Pad

Pads to seal the backs of any boxes and any thru wall penetrations

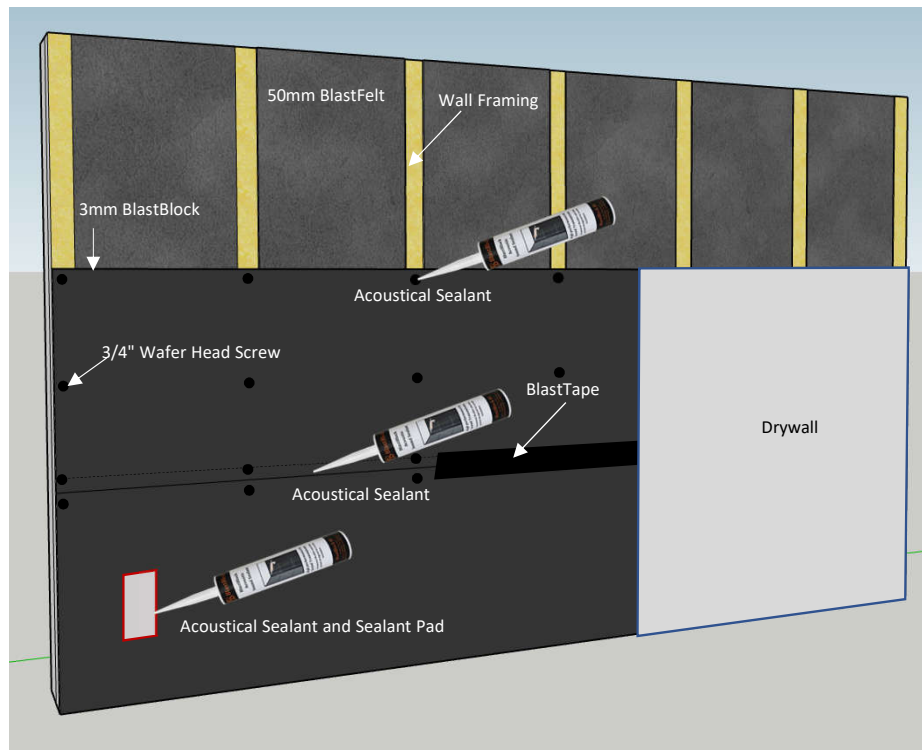


For superior sound isolation results, use outlet Putty Pads over electrical boxes before installing BlastBlock.



**BlastBlock BV**  
Van der Takstraat 8  
3071 LL Rotterdam, The Netherlands  
+31 10 310 4928 Email: [info@blast-block.com](mailto:info@blast-block.com)

# Wall Assembly

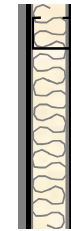


## STC 53 ✓



- Layers**
- 12mm Gypsum Board
  - Steel structure
  - 50mm BlastFelt
  - 3mm BlastBlock
  - 12mm Gypsum Board

## STC 56 ✓



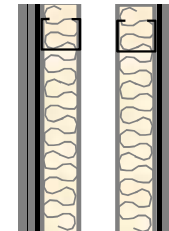
- Layers**
- 12mm Gypsum Board
  - 3mm BlastBlock
  - Steel structure
  - 50mm BlastFelt
  - 3mm BlastBlock
  - 12mm Gypsum Board

## STC 56 ✓



- Layers**
- 80mm Brick
  - Steel structure
  - 50mm BlastFelt
  - 3mm BlastBlock
  - 12mm Gypsum Board

## STC 68 ✓

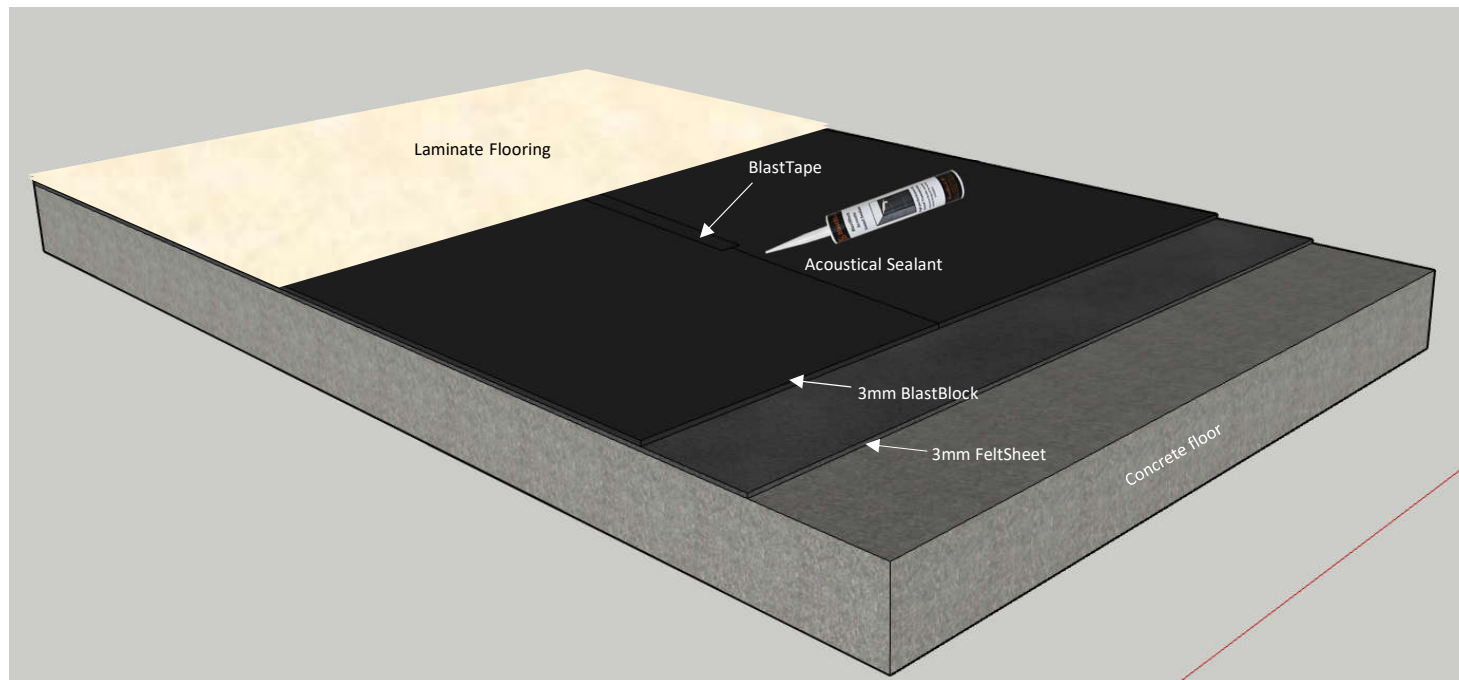


- Layers**
- 2 x 12mm Gypsum Board
  - 3mm BlastBlock
  - Steel structure
  - 50mm BlastFelt
  - 50mm air space
  - Steel structure
  - 50mm BlastFelt
  - 3mm BlastBlock
  - 2 x 12mm Gypsum Board

**BlastBlock BV**

Van der Takstraat 8  
3071 LL Rotterdam, The Netherlands  
+31 10 310 4928 Email: info@blast-block.com

# Floor Assembly



IIC 51 dB  
STC 55

**BlastBlock BV**

Van der Takstraat 8  
3071 LL Rotterdam, The Netherlands  
+31 10 310 4928 Email: [info@blast-block.com](mailto:info@blast-block.com)